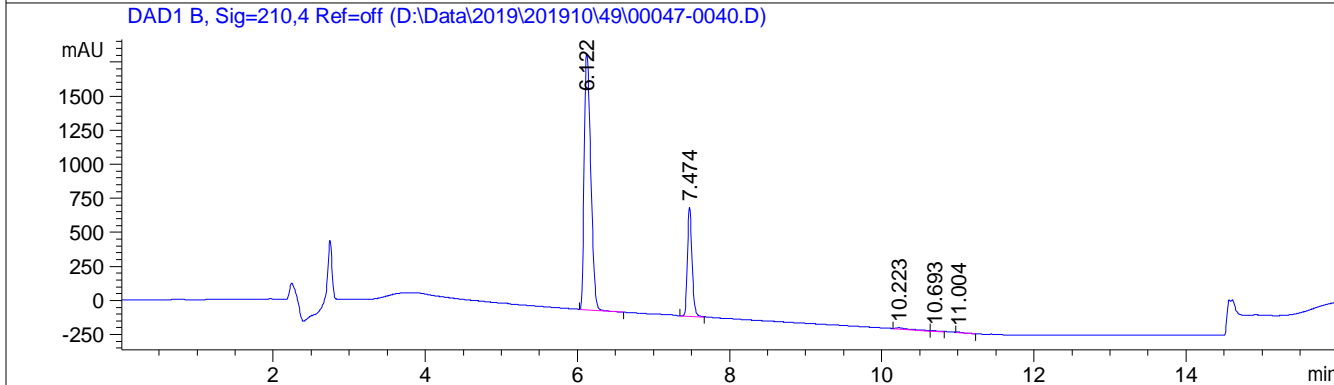
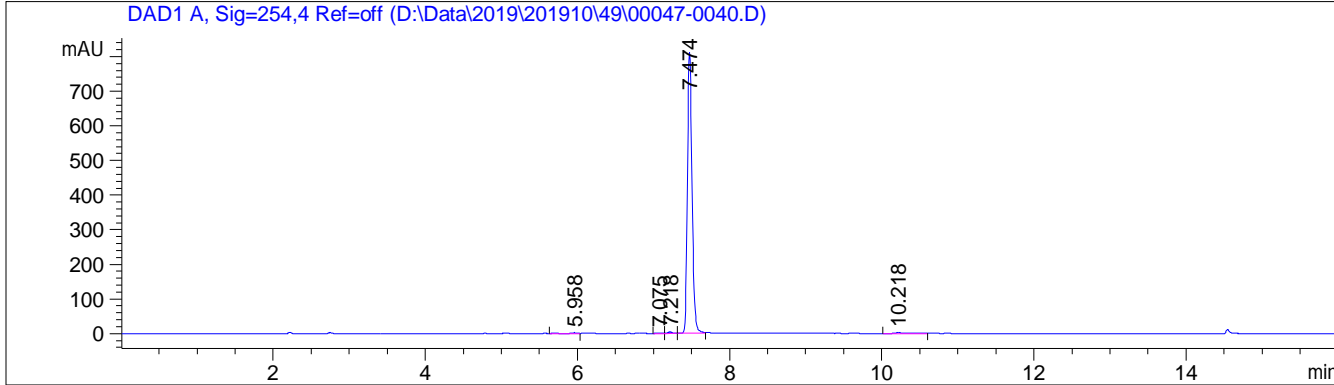


Acq. Operator : SYSTEM
 Sample Operator : SYSTEM
 Acq. Instrument : HPLC_E
 Injection Date : 10/22/2019 8:10:02

Seq. Line : 2
 Location : P2-A-04
 Inj : 1
 Inj Volume : 2.000 µl

Different Inj Volume from Sample Entry! Actual Inj Volume : 5.000 µl

Acq. Method : D:\Data\2019\201910\49\10-80-254-210-AB.M
 Last changed : 10/28/2019 8:13:53 by SYSTEM
 Analysis Method : D:\METHOD\10-80-254-210-AB.M
 Last changed : 10/28/2019 8:13:53 by SYSTEM
 Additional Info : Peak(s) manually integrated



=====
 Area Percent Report
 =====

Sorted By : Signal
 Multiplier : 1.0000
 Dilution : 1.0000
 Do not use Multiplier & Dilution Factor with ISTDs

Signal 1: DAD1 A, Sig=254,4 Ref=off

Peak #	RetTime [min]	Type	Width [min]	Area [mAU*s]	Height [mAU]	Area %
1	5.958	BV	0.0586	7.40471	1.93737	0.2137
2	7.075	BV	0.0572	6.88525	1.85912	0.1987
3	7.218	VV	0.0652	17.32088	4.10678	0.4999

Sample Name: 00047-0040

Peak #	RetTime [min]	Type	Width [min]	Area [mAU*s]	Height [mAU]	Area %
4	7.474	VV	0.0670	3414.32129	813.17670	98.5446
5	10.218	BV	0.1031	18.81648	2.52177	0.5431
Totals :				3464.74861	823.60173	

Signal 2: DAD1 B, Sig=210,4 Ref=off

Peak #	RetTime [min]	Type	Width [min]	Area [mAU*s]	Height [mAU]	Area %
1	6.122	BB	0.0961	1.13389e4	1886.00574	76.2208
2	7.474	BV	0.0669	3352.90967	799.68158	22.5385
3	10.223	VV	0.1660	130.03218	10.39284	0.8741
4	10.693	VV B	0.1316	31.63014	3.24905	0.2126
5	11.004	VB	0.0837	22.89580	3.94529	0.1539
Totals :				1.48763e4	2703.27450	

*** End of Report ***